



Stormwater Pollution Prevention Plan

As required per the General Permit PRR04011 for Stormwater Discharges from Small Municipal Separate Storm Sewer Systems (MS4s) in the Commonwealth of Puerto Rico under the Clean Water Act Phase II of the National Pollutants Discharge Elimination System (NPDES).

Prepared exclusively to:

The University of Puerto Rico
Ponce, Campus

By:



JJR Engineering Services and Associates

September 2020

Revision 0

CONTENTS

<u>Seven Phases for Developing and Implementing SWPPPs</u>	<u>1</u>
1.0 <u>SWPPP Overview</u>	<u>2</u>
2.0 <u>Planning and Organization</u>	<u>2</u>
2.1 SWPPP Coordinator and Team.....	2
3.0 <u>Assessment</u>	<u>4</u>
3.1 Site Description	4
3.2 Site Map	4
3.3 Significant Material Inventory.....	5
3.4 Vehicle Wash Water and Wastewater	5
3.5 Spills and Leaks	5
3.6 Non-Stormwater Discharges	6
3.7 Allowable Non-Stormwater Discharges	6
3.8 Existing Stormwater Monitoring Data.....	6
3.9 Site Summary.....	6
4.0 <u>Implementation</u>	<u>7</u>
4.1 Minimize or Prevent Exposure.....	7
4.2 Good Housekeeping.....	7
4.3 Preventive Maintenance	8
4.4 Best management Practices (BMPs)	9
4.5 Sediment and Erosion Control.....	9
4.6 Management of Runoff	10
4.7 Spill Prevention and Response.....	10
4.8 Employee Training	10
5.0 <u>Evaluation</u>	<u>11</u>
5.1 Quarterly Visual Monitoring	11
5.2 Comprehensive Site Compliance Evaluations	11
5.3 Recordkeeping and Reporting	11
5.4 Plan Revisions	12
6.0 <u>Certifications</u>	<u>12</u>

Attachment 1 - Stormwater Management Plan Organization Chart 13

Attachment 2 - UPR-Ponce Site Map 14

Attachment 3 – Summary List of Significant Spills and Chronic Leaks Table..... 15

Attachment 4 – Outfalls Monitoring Data 16

Attachment 5 – SWPPP Spill Prevention and Response Flowchart..... 17

Attachment 6 – Federal and State Agencies Notification List..... 18

Attachment 7 – Attendance Sheet – Employee Training..... 19

Attachment 8 – Sample quarterly Visual Monitoring Inspection Log..... 20

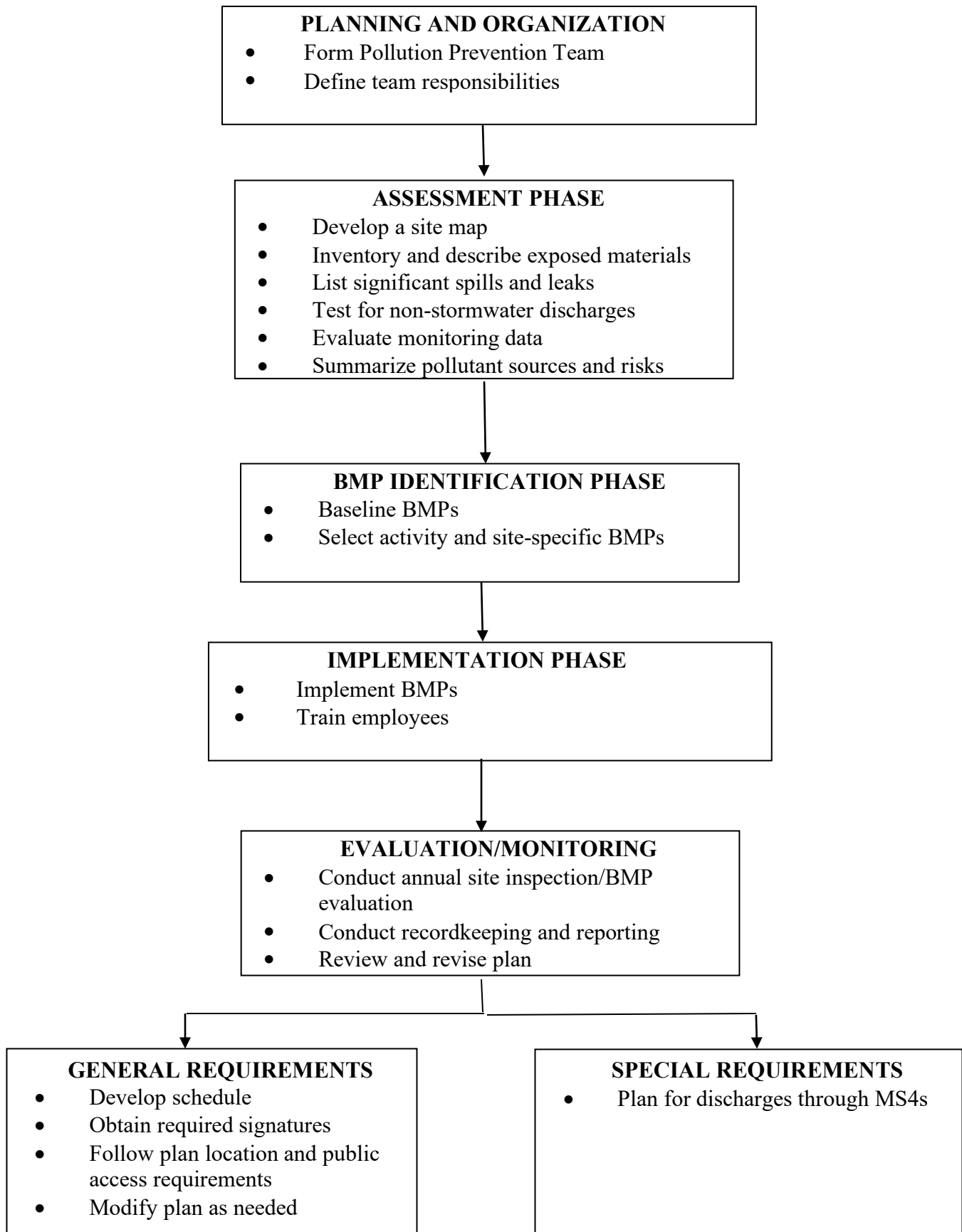
Attachment 9 – UPR-Ponce SWPPP Inspection Areas..... 22

Attachment 9 – UPR-Ponce SWPPP Inspection Report Form.....23

Attachment 10 – SWPPP Incident Record Form.....24

Attachment 11 – SWPPP Incident Follow-Up Report.....25

SEVEN PHASES FOR DEVELOPING AND IMPLEMENTING STORMWATER POLLUTION PREVENTION PLANS



Stormwater Pollution Prevention Plan UPR-Ponce Campus

Facility Name: University of Puerto Rico, Ponce Campus

Facility Address: Santiago de los Caballeros Avenue, Ponce, Puerto Rico, 00716

1.0 STORMWATER POLLUTION PREVENTION PLAN (SWPPP) OVERVIEW

This Stormwater Pollution Prevention Plan:

- Identifies the SWPPP coordinator with a description of the coordinator's duties;
- Identifies members of the SWPPP team and lists their responsibilities;
- Describes the facility, with information on location and activities, a site map, and a description of the stormwater drainage system;
- Identifies potential stormwater contaminants;
- Describes stormwater management controls and various Best Management Practices (BMPs) needed to reduce pollutants in stormwater discharges;
- Describes the facility's monitoring plan; and,
- Describes the implementation schedule and provisions for amendment of the plan.

2.0 PLANNING AND ORGANIZATION

2.1 SWPPP Coordinator and Team

This is the organizational list of employees and responsibilities for the pollution prevention team. This team is responsible for implementing the Stormwater Pollution Prevention Plan at UPR-Ponce. Attachment 1 include the Stormwater Management Organization Chart with the titles and names of every member of the Pollution Prevention Team.

Liaison: Tessie Cruz-Rivera Office Phone: 787-841-8181 Ext. 2201

Title: Chancellor Cell phone: 787- 901-7141

Responsibilities:

Competent person in charge of interagency coordination's and liaison between UPR-Ponce and regulatory agencies.

Leader: Isaac Colón Degro Office Phone: 787-844-8181 Ext. 2600

Title: Administrator Dean Cell phone: 787- 396-5851

Responsibilities:

Coordinate all stages of plan development, inspections and implementation; coordinate employee training programs; keep all records and ensure that reports are submitted; oversee monitoring programs. Perform and maintain the budget of Small MS4 projects.

Member team: Alberto García Office Phone: 787-844-8181 Ext. 2701

Title: Physical Resources Director Cell Phone: 787-319-3662

Responsibilities:

Implement the preventive maintenance program; oversee good housekeeping activities; and serves as spill response coordinator.

Member team: Celia González Office Phone: 787-844-8181 Ext. 2702

Title: Environmental, Health and Safety Officer Cell Phone: 787-398-6546

Responsibilities:

Conduct/assist with quarterly inspections; staff training; conduct sampling/visual monitoring and EPA's written annual report and technical liaison with regulatory agencies. Revise the SWPPP, IDDEP and SSO program and its effectiveness.

Member team: Richard Guzmán Office Phone: 787-844-8181 Ext.2632

Title: Purchasing Office Director Cell Phone: 787-248-1966

Responsibilities:

Maintain the materials inventory up to date and perform any emergency purchase necessary to comply with Small MS4 General Permit.

Member team: Porfirio Rosario Office Phone: 787-844-8181 Ext 2701

Title: Construction Supervisor Cell Phone: 939-292-3460

Responsibilities:

Supervise construction activities, contractor's compliance with SWPPP guidelines and erosion and sediment control techniques effectiveness.

The Finance Director, Arturo Almodóvar, is the person responsible for the accounts to be used and the materials purchase, equipment rental and external services contract to expeditiously address the MS4 related matters. The Receipts and Deliver Director, Jorge Rodríguez, is the person responsible for receiving the materials, equipment purchased or rented and for attending and taking to the incident scene the employees for the emergency response, and any SWPPP related receiving material matter. The University Guard Director, Germán Pimentel, is the person responsible to direct traffic properly and will log any person, equipment, materials or contractor who requests to enter. Private Guard Sargent, Joel Rodríguez Meléndez, is the person responsible to instruct the guards to report any SWPPP related incident inside the campus, and assist Mr. Pimentel in the incident response tasks related to security.

3.0 ASSESSTMENT

3.1. Site Description

UPR-Ponce is located in the south part of Puerto Rico, at Santiago de los Caballeros Avenue in the Ponce Municipality. The Campus has two (2) main parking areas; the west parking which has a capacity for eight hundred fifty one (851) vehicles and the north parking area which has a capacity for five hundred (500) vehicles) The total area of the campus covered eighty-six (86) acres (0.35 square kilometers) and consisted of twenty one (21) buildings that their main use is for academic purposes, laboratories and administrative support activities.

UPR-Ponce owns a fleet of vehicles for administrative support functions and maintenance activities (light heavy equipment). The two (2) outfalls are located as indicated in the following map in addition with their respective coordinates, direction of the stormwater flow, catchments and drainage system interconnection points.

The minor maintenance and repair activities for vehicles are performed inside mechanic shop areas with the respective parts cleaning. Mayor repairment will be perform outside UPR-Ponce campus.

UPR-Ponce have a designated recycling material storage (including scrap) area segregated by materials. The access to this area is restricted for not related activities. All gravel or construction material is covered with polyurethane material to avoid stormwater exposure. Oil waste storage is under a roof area and all obsolete vehicle are transported outside UPR-Ponce for proper disposal.

3.2. Site Map

UPR-Ponce updated the stormwater drainage map indicating the different drainage areas, direction of the stormwater flow and the structural stormwater pollution control measures. These measures are vegetated buffers and sediment traps.

UPR-Ponce submitted a Notice of Intent (NOI) on September 28, 2016 in which identified the Rio Portugués and Rio Bucaná, as the nearest water bodies, 560 meters west and 550 meters east, from UPR-Ponce premises, respectively. On January 23, 2017 EPA sent a Notice of Coverage under NPDES MS4 to UPR-Ponce (PRR040011).

The Puerto Rico 305 (b) / 303 (d) Integrated Report (November 2016) established TMDLs for impaired waters by the Water Quality Area of the Puerto Rico Environmental Quality Board (PREQB). In this report, PREQB established TMDLs for Fecal Coliform at Rio Portugués and Rio Bucaná. Also, PREQB listed pH and Turbidity as pollutants causing impairment at Rio Portugués.

UPR-Ponce do not experience significant spills and/or chronic leaks. The Site Map identifies activities that are exposed to precipitation or runoff. Those activities are: fueling stations; vehicle/equipment maintenance areas; area for loading/unloading materials; above ground tanks; waste storage and disposal areas, including dumpsters; exposed significant materials; location and description of allowable non-stormwater discharges; location of runoff from adjacent property if it impacts your stormwater; access roads; location of material transfer and location of machinery.

Attachment 2 is the facility site map, showing potential sources of pollution and the flow direction of the stormwater.

3.3. Significant Material Inventory

UPR-Ponce developed an inventory of any materials or activities that are exposed to precipitation or stormwater runoff. Those materials are identified in the site map.

3.4. Vehicle Wash Water and Wastewater

The discharge of wash water from vehicles to the storm drain is not allowed. Vehicle washing takes place outside UPR-Ponce premises.

3.5 Spills and Leaks

Spills and leaks include but are not limited to releases of oil and substances in excess of quantities that are reportable under CWA §311 (see 40 CFR 110.10 and 40 CFR 117.21), section 102 of the Comprehensive Environmental Response, Compensation and Liability Act (CERCLA) or 38 M.R.S.A. §§ 543, 550 and 1318-B. Spills may also include releases of oil or substances that are not in excess of reporting requirements. UPR-Ponce Identified areas where potential spills and leaks, which can contribute pollutants to stormwater discharges, can occur, and their accompanying drainage points.

This SWPPP is a means of documenting the response to major and minor spills through a SWPPP Spill Report. Attachment 3 includes the Summary List of Significant Spills and Chronic Leaks Table and the SWPPP Incident and Follow-Up Reports Forms.

A persistent chronic leak without repair can have a significant impact. Chronic leaks from old vehicles and equipment have to be attended. There have been no significant spills or chronic leaks at UPR-Ponce premises in the past 3 years.

3.6 Non-Stormwater Discharges

UPR-Ponce certifies that non-allowable non-stormwater discharges are not reaching the stormwater only discharges. However, UPR-Ponce identified the potential non-allowable non-stormwater discharges, the method that will be used for testing and evaluate these discharges and its impact to the stormwater drainage system, proper documentation regarding these releases, and how to stop these discharges. An Illicit Discharge Detection and Elimination Program was developed to identified all potential illicit discharges, identifying manholes and catchments and labeling stormwater drains to outfalls, to prevent any non-stormwater discharges.

3.7 Allowable Non-Stormwater Discharges

Section 1.4 of the 2016 Small MS4 General Permit PRR040000 identified the following categories of non-stormwater discharges that are allowable: water line flushing; landscape irrigation; diverted stream flows; rising ground water; uncontaminated ground water infiltration (as defined at 40 CFR § 35.2005(20)); uncontaminated pumped ground water; discharge from potable water sources; foundation drains; air condition condensate; irrigation water, springs and water from crawl space pumps.

3.8 Existing Stormwater Monitoring Data

UPR-Ponce does not have historical existing monitoring data. Attachment 4 will summarize the samples results for the concern parameters of the NPDES General Permit MS4.

3.9 Site Summary (Sources of pollution with a high risk of contaminating stormwater)

UPR-Ponce identified four (4) main potential sources of pollution. These main potential sources of pollution with a high risk of contaminating stormwater are the following: janitorial duties; vehicle repairs; grease tramps; trash containers area and tractors parking area.

UPR-Ponce also identified the pollutants of concern by activity and or source. The following table shows the mentioned information.

Activity / Source	Pollutants of Concern
Building maintenance / painting	Wash water, paint residues, cleaning chemical products, thinner sediments and solids
Vehicle repairs	Oil, lubricants, coolant, fuel
Trash Storage Areas	Leaching residues, organic materials, litter and debris
Tractors	Hydraulic oil, diesel and lubricants
Lawn maintenance	Organic waste, fuel, oil, pesticides, herbicides and sediments

4.0 IMPLEMENTATION

This section describes practices that UPR-Ponce are taking in place or will be implemented to control pollutants that have the potential to contaminate stormwater.

4.1 Minimize or Prevent Exposure

UPR-Ponce, as to the maximum extent practicable, locate materials and activities inside or protect these material and activities with storm resistant coverings, to avoid exposure to rain and runoff. UPR-Ponce identified these materials and activities and will implement a non-exposure policy, as practicable. A roofed storage area will be constructed to place equipment and construction material aggregates.

4.2 Good Housekeeping

UPR-Ponce identified the following good housekeeping practices for implementation:

- No washing of equipment or vehicles to the storm drain is allowed. Vehicles washing is performed outside UPR-Ponce premises.
- Spills are immediately cleaned up with an absorbent material (Spill Kits) conveniently located besides potential spill areas. (See Spill Prevention and Response Procedures in Section 4.7)
- All fluid products and wastes are kept indoors.
- Waste oil stored in drums outside are kept closed except when filling.
- All changing of fluids is done indoors in the maintenance garage.
- Dry sweeping will be encourage using mechanical sweepers.
- Trash containers will be closed when not in use. The trash and recycling containers storage area will be restricted to control the trash management and containers integrity.
- Leaking vehicles needing repair will be kept indoors.
- All trash and recycling containers will be in good condition to avoid leaching.
- A roofed storage area will be constructed to place equipment and construction material aggregates.

Also, the following is a list of good housekeeping practices will be implemented at UPR-Ponce:

- Liquid and dry material storage will be relocated to an indoor area with proper containment and separation of potentially volatile materials.
- Spigots/funnels will be used to minimize drips/leaks.
- Drip pans will be used when changing fluids.
- All above ground tanks will have secondary containment. Emergency Generators loading and unloading areas will be provided with secondary containment to avoid any spill runoff.

4.3 Preventive Maintenance

UPR-Ponce develops a preventive maintenance program that involves inspections and maintenance of stormwater management controls and routine inspections of facility operations to detect faulty equipment. Equipment, such as tanks, containers and drums, should be checked regularly for signs of deterioration. The following is a list of preventive maintenance measures.

The following is a list of preventive maintenance procedures practiced at this facility:

- As part of this SWPPP, UPR-Ponce has a written spill prevention and response flowchart in place.
- All staff are aware of spill prevention and response procedures
- Spill response equipment is located at all potential spill areas.
- All transfers to and from the tank are observed by qualified personnel trained in spill response procedures.
- Catch basins and sediment chambers are checked and cleaned as needed.
- Drainage swales are kept clear of debris and maintained to prevent erosion.
- Settling basins are cleaned out as necessary.
- Hydraulic equipment is kept in good repair to prevent leaks.
- Outdoor drum and storage tank containment areas are checked for leaks.
- Vehicles are regularly inspected for leaks. Leaks are contained with drip pans until repaired.
- Uncontaminated stormwater in containment areas is kept to a minimum.

The following is a list of preventive maintenance measures that will be implemented:

- Regular inspections of the fueling area for signs of spills or leaks and proper labeling. Hoses and fittings will also be regularly inspected.

- Regular inspections of above ground storage tanks for signs of corrosion or leaks.
- All materials, waste storage areas, drains, tanks and cans will be properly labeled.

4.4 Best Management Practices (BMPs)

The following is a list of existing and planned Best Management Practices at UPR-Ponce. When implemented, the BMPs will prevent or reduce the discharge of potential pollutants in stormwater runoff for each area of concern listed in the Site Summary (Section 3.9).

To prevent or reduce the potential of stormwater contamination in the loading and unloading areas, the following BMPs will be implemented:

- Loading and unloading are done inside where possible.
- Hazardous materials that are in easily ripped or breakable containers (such as bags, plastic pails) are not loaded or unloaded outside when it rains.
- A staff member is present during loading and unloading operations.
- When drums are being handled, the storm sewer is covered to help contain potential spills.
- An emergency spill kit will be available during loading and unloading activities.

To prevent or reduce the potential of stormwater contamination in outdoor storage areas, the following BMPs will be implemented

- Diesel fuel tank. This above ground tank has double containment capable of holding the entire contents of the tank.
- A trained employee is on hand at all times during filling.
- Gasoline tank. A trained employee is on hand at all times during filling.
- Scrap metal. All scrap metal is cleaned of hazardous materials prior to storage on the scrap metal pile. Salvage vehicles have fluids removed prior to storage.
- Dumpster lid is closed except when being loaded.

4.5 Sediment and Erosion Control

There are minors potential areas for erosion on this site. Below is a list of potential erosion areas and measures to prevent erosion.

- Potential source of erosion: Slopes of access road and perimeter of the site.

- Management practice(s) to prevent erosion: Seed unvegetated areas. Stabilize sloped areas.
- Management practice(s) to prevent erosion: UPR-Ponce will perform a mitigation project to place artificial grass, as sediments tramp, at each discharge channel.

4.6 Management of Runoff

The following management practices for runoff are considered at UPR-Ponce campus:

- Drainage outfalls discharge through artificial grass that will serve as sediments tramp.
- Impervious areas have no curbs in order to encourage sheet flow runoff to vegetative areas.

4.7 Spill Prevention and Response

Attachment 5 that includes the UPR-Ponce Spill Prevention and Response Flowchart. Attachments 10 and 11 includes the SWPPP Incident Report and Follow-Up Report Forms.

- Spill response equipment is kept at the main_warehouse_and includes absorbent booms, oil absorbent sand and shovels. Pollution Prevention Team are instructed in its location and use. Employees who may cause, detect, or respond to a spill or leak shall be trained in these procedures and have necessary spill response equipment available.
- The pollution prevention team leader or the spill coordinator will be advised immediately of all spills of hazardous materials or regulated materials, regardless of quantity.
- Spills will be evaluated to determine the necessary response. In the event of an equal or above the reportable quantity spill established under 40 CFR §§ 110, 117, or 302, the National Response Center (NRC) will be contacted by calling (800-424-8802 and/or (202) 267-2675) within two hours of the incident. If there is a health hazard, fire or explosion potential, 911 will be called Commonwealth of Puerto Rico or local requirements may necessitate reporting spills or discharges to local emergency, public health or drinking water supply agencies, and owners of public drinking water supplies. Attachment 6 includes the Federal and State Agencies Notification List.
- Spills will be contained as close to the source as possible with a dike of absorbent materials from the emergency spill kit. Additional dikes will be constructed to protect swales or other stormwater conveyances of streams. A cover or dike will protect any other stormwater structures such as catch basins.

4.8 Employee Training

UPR-Ponce developed a stormwater pollution prevention employee training

program. The training covers such topics as spill prevention and response, good housekeeping, and materials management practices. The attendance sheets will be kept with this plan. Attachment 7 is a sample attendance sheet for the employee training session(s). Stormwater training can be combined with other training such as health, safety or emergency response.

The following topics will be covered at employee training sessions: spill prevention and response procedure, good housekeeping practices, materials management practices, preventive maintenance, best management practices to minimize stormwater runoff contamination and prevention exposure policy implementation. All employees will be trained annually.

Pollution prevention team members will meet at least twice a year to discuss the effectiveness of and improvements to the employee training program.

5.0 EVALUATION

5.1 Quarterly Visual Monitoring

UPR-Ponce must visually examine the stormwater discharges at each outfall every quarter. The visual examination must be made during daylight hours and within 30 minutes after stormwater begins to runoff. Document observed contamination and/or problems with date and time. Determine the source of contamination and take action to eliminate it. A sample quarterly monitoring log is shown in Attachment 8.

5.2 Comprehensive Site Compliance Evaluations

UPR-Ponce must inspect the entire facility at least four (4) times a year. The campus inspects for evidence of pollution, evaluate BMPs that have been implemented, and inspect equipment. The site inspection report must include date of inspection, name of personnel conducting the inspection, observations, assessment of BMP's, corrective actions taken, and a signed certification. Attachment 9 includes the Inspection Area Map of the six (6) inspection delimitating areas and the SWPPP Area Inspection Form.

UPR-Ponce must include this information in a Compliance Evaluation Report and keep the report with the SWPPP. Both the Evaluation Report and any reports of follow-up action must be certified with the following language: "This Compliance Evaluation Report has been prepared by qualified personnel who properly gathered and evaluated information submitted for this Report. The information in this Report, to the best of my knowledge, is accurate and complete."

5.3 Recordkeeping and Reporting

UPR-Ponce must maintain records of spills, leaks, inspections and maintenance activities for at least one year after the permit expires.

Records described in this SWPPP will be retained on site for 5 years from the date of the cover letter that notifies this facility of coverage under the stormwater permit. These records will be made available to state or federal inspectors upon request. Additionally, employee training records shall also be maintained.

5.4 Plan Revisions

UPR-Ponce will address changes in a facility's layout or operations in the Stormwater Pollution Prevention Plan. If UPR-Ponce expands its operations, or changes any significant material handling or storage practices which could impact stormwater, this SWPPP will be amended. The amended Plan will describe the new activities that contribute to increased pollution and planned control measures.

This Plan will also be amended if a state or federal inspector determines that it is not effective in controlling stormwater pollutants discharged to waterways.

6.0 CERTIFICATIONS

UPR-Ponce signed the certification by an "authorized representative," this person is at the top of this management chain and has the authority to sign and certify this type of document.

All stormwater outfalls to surface waters at this facility have been evaluated and found to be free of non-allowable non-stormwater discharges.

Stormwater Pollution Prevention Plan

This Stormwater Pollution Prevention Plan has been prepared in accordance with good engineering practices and the requirements of the Small Municipal Separate Storm Sewer System General Permit PRR040011. Qualified personnel properly gathered and evaluated information submitted for this Plan. The information in this Plan, to the best of my knowledge, is accurate and complete.

Tessie Cruz-Rivera

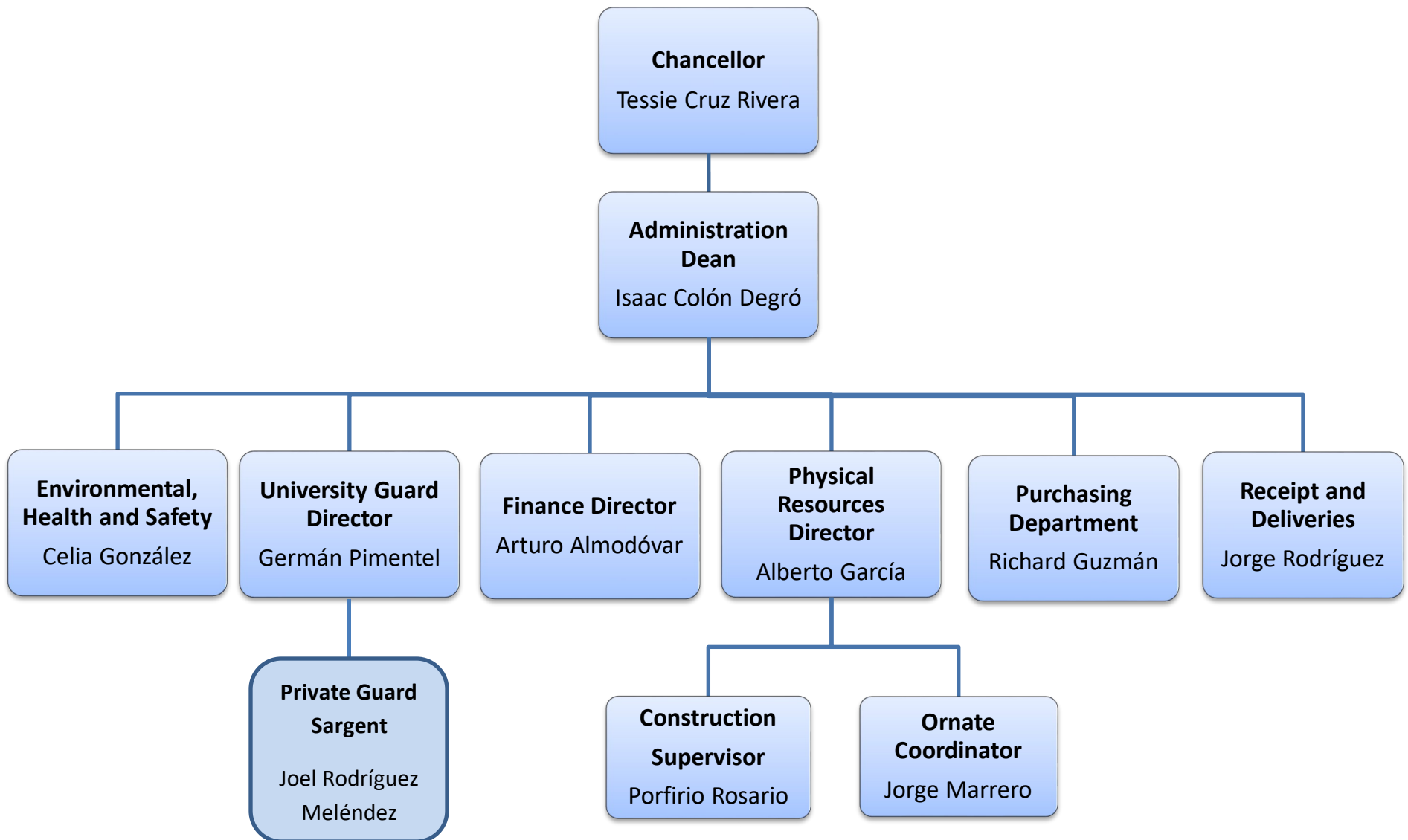
Name

Chancellor

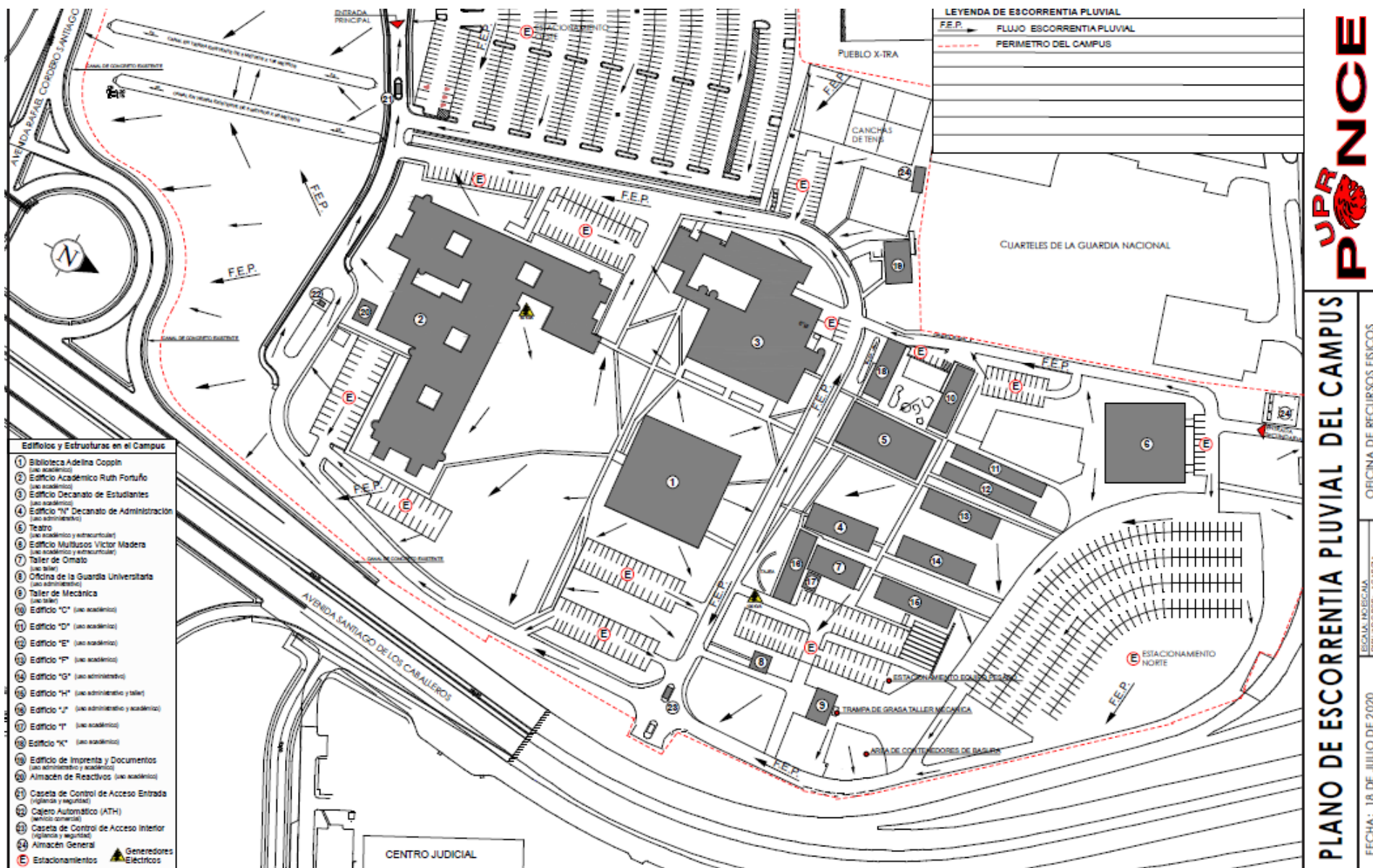
Title

Date

ATTACHMENT 1 - STORMWATER MANAGEMENT PLAN ORGANIZATION CHART



Attachment 2 - UPR-Ponce Site Map



Attachment 3

Summary List of Significant Spills and Chronic Leaks Table

Instructions: List significant spills of oils, toxic or hazardous materials that have occurred in the last 3 years. Show these areas on the site map.

Date	Spill	Leak	Source	Description			Response Procedures	Measures Taken to Prevent Recurrence
	(check only one)			Type of Material	Quantity	Reason		

Completed by: _____

Title: _____

Date: _____



Attachment 4

Outfalls Monitoring Data

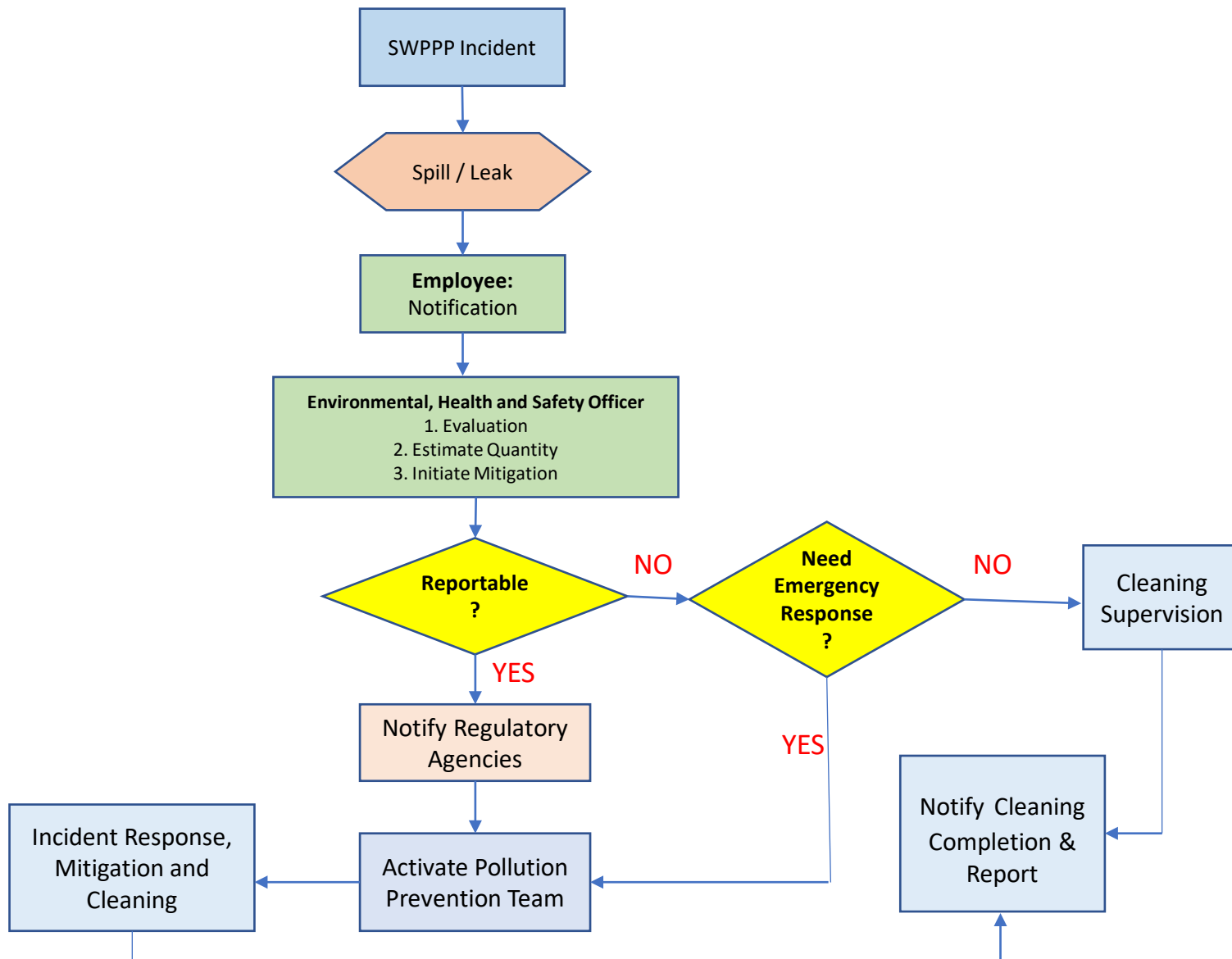
YEAR:

Parameter	Unit	EPA or Standard Method	Outfall 001 Results	Outfall 002 Results
pH		EPA 150.3		
Turbidity		EPA 180.1		
Conductivity		EPA 120.1		
Surfactants		SM 5540-C-2000		
Ammonia		EPA 350.1; SM 4500		
Potassium		EPA 200.7; SM 3120		
Enterococci		EPA 1600 25; SM 9230		
Total Coliform		EPA p. 114 3; SM 9221		
Fecal Coliform		EPA p. 132 3; SM 9221		

YEAR:

Parameter	Unit	EPA or Standard Method	Outfall 001 Results	Outfall 002 Results
pH		EPA 150.3		
Turbidity		EPA 180.1		
Conductivity		EPA 120.1		
Surfactants		SM 5540-C-2000		
Ammonia		EPA 350.1; SM 4500		
Potassium		EPA 200.7; SM 3120		
Enterococci		EPA 1600 25; SM 9230		
Total Coliform		EPA p. 114 3; SM 9221		
Fecal Coliform		EPA p. 132 3; SM 9221		

Attachment 5 - SWPPP Spill Prevention and Response Flowchart



Attachment 6 - Federal and State Agencies Notification List

Agency	Location	Telephone
U.S. Coast Guard	USCG Sector San Juan 5 Calle La Puntilla San Juan, PR	(787) 289-2041 (24 hours)
EPA Caribbean Field Office	City View Plaza II Suite 7000 #48 PR 165 Km 1.2 Guaynabo, PR	(787) 977-5870, (787) 977-5865 1-800-424-8802 (24 Hours-Emergency Hotline)
Puerto Rico Department of Natural and Environmental Resources (PRDNER) EQB (Business hrs.)	San Juan, PR	(787) 767-8181 ext. 3220 (787) 864-0103 – Ponce (787) 864-4776 - Guayama
Agencia Estatal para Manejo de Emergencias y Administración de Desastres (AEMEAD)	San Juan, PR	(787) 724-0124 (787) 480-2222 (787) 294-0277
EPA Region II	New York City, NY	(212) 637-3000
National Response Center for Oil and Hazardous Spills	Washington, DC	(202) 267-2675 1-800-424-8802
Emergency		911
Puerto Rico Aqueduct and Sewer Authority (PRASA)	Ponce Regional Office	(787) 520-2482 1-877-411-2487 Ponce: 787-259-5700 Ext. 1233



Attachment 7

Attendance Sheet – Employee Training Stormwater Pollution Prevention Plant

Date: _____

SWPPP's topic: _____

Name	Position	Signature

Attachment 8 **Sample Quarterly Visual Monitoring Inspection Log** **for Stormwater Pollution**

Instructions: Every quarter you must visually inspect stormwater outfalls at your facility. This attachment is a sample monitoring log.

Facility Name					Sampler's Name	
Facility Address					Small MS4 Permit Number	
Rainfall (est. inches)					Time Since Last Measurable Storm (Hours)	

OUTFALL NUMBER	001	002				
OBSERVATION TIME						
EST. TIME FROM ONSET OF RUNOFF						
DISCHARGE TYPE Rain or Snowmelt						
Sample Volume (ml)						
COLOR						
ODOR						
CLARITY						
FLOATING SOLIDS*						
SETTLED SOLIDS*						
SUSPENDED SOLIDS*						
FOAM						
OIL SHEEN						
Probable source of any observed contamination						

*Enter description of these criteria in the general comments section for each outfall on the back of this page.

Under penalty of law I certify that these statements are true and correct pursuant to the terms and conditions stated in the Small MS4 NPDES General Permit.

Sampler's Signature _____ Date _____

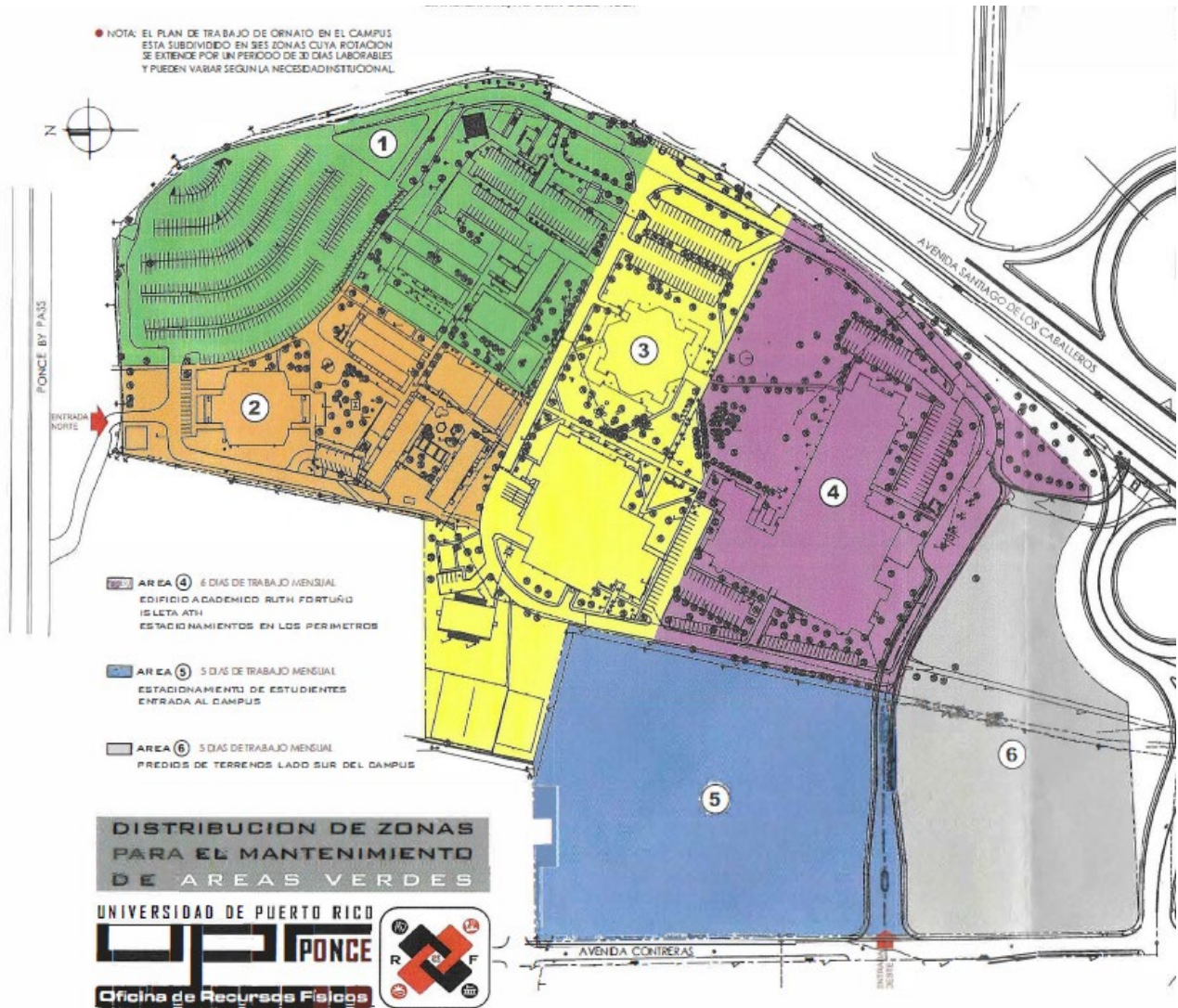
General Comments

In the comments section, enter physical description of floating, settled, and suspended solids for each outfall sampled. Enter general comments on the condition and appearance of each outfall in the comments section also as indicated in the instructions.

Outfall 1	<u>Comments:</u> _____ _____ _____
Outfall 2	<u>Comments:</u> _____ _____ _____

Attachment 9

UPR-Ponce SWPPP Inspection Areas





SWPPP Inspection Report Form

Número de Área: _____

Fecha: _____

Nombre del Área: _____

Hora: _____

A. Área de Almacenaje de Vehículos y Equipo Pesado

Existe No existe

- | | | |
|---|----------|----------|
| 1. Está ordenada y en buenas condiciones. | Si _____ | No _____ |
| 2. Hay evidencia de derrames o escapes | Si _____ | No _____ |
| 3. El techo o cubierta en sitio (cubre la totalidad del vehículo y/o equipo) y está en buenas condiciones | Si _____ | No _____ |
| 4. El <i>housekeeping</i> en los alrededores es bueno | Si _____ | No _____ |
| 5. Comentarios: _____ | | |

B. Área de Almacenaje de Agregados de Construcción

Existe No existe

- | | | |
|---|----------|----------|
| 1. Está ordenada y en buenas condiciones | Si _____ | No _____ |
| 2. Hay evidencia de arrastre de los agregados | Si _____ | No _____ |
| 3. Techo o cubierta en sitio (cubre la totalidad del agregado) y está en buenas condiciones | Si _____ | No _____ |
| 4. El <i>housekeeping</i> en los alrededores es bueno | Si _____ | No _____ |
| 5. Comentarios; _____ | | |

C. Área de Contenedores de Basura

Existe No existe

- | | | |
|---|----------|----------|
| 1. Los contenedores están en buenas condiciones | Si _____ | No _____ |
| 2. Los contenedores están cubiertos | Si _____ | No _____ |
| 3. El <i>housekeeping</i> en los alrededores es bueno | Si _____ | No _____ |
| 4. Comentarios; _____ | | |

D. Área de Diques de Generadores de Emergencia

Existe No existe

- | | | |
|--|----------|----------|
| 1. El dique está en buenas condiciones | Si _____ | No _____ |
| 2. Hay evidencia de derrames o escapes | Si _____ | No _____ |
| 3. Hay materiales en el dique que le resten su capacidad | Si _____ | No _____ |
| 4. El <i>housekeeping</i> en los alrededores es bueno | Si _____ | No _____ |
| 5. Comentarios: _____ | | |

Nombre Inspector: _____ Firma Inspector : _____



SWPPP INCIDENT RECORD FORM

Número del incidente: _____

Fecha del incidente: _____

Hora: _____

¿Es un "Near Miss"?

Si ____ No ____

Condiciones del tiempo: _____

Lugar : _____

Sustancia derramada: _____

Cantidad derramada: _____

¿Incidente notificado a las Agencias Reguladoras?

Si ____ No ____

Agencias Notificadas: _____

Hora: _____

Hora: _____

Hora: _____

Comentarios: _____

¿Incidente notificado al Oficial de Salud, Seguridad y Ambiental ?

Si ____ No ____

Personas Notificadas: _____

Hora: _____

Hora: _____

Hora: _____

Comentarios: _____

¿Se requirieron los servicios de alguna compañía?

Si ____ No ____

Nombre de la compañía: _____

Servicios utilizados para: _____
