
Dashboards

UPRP

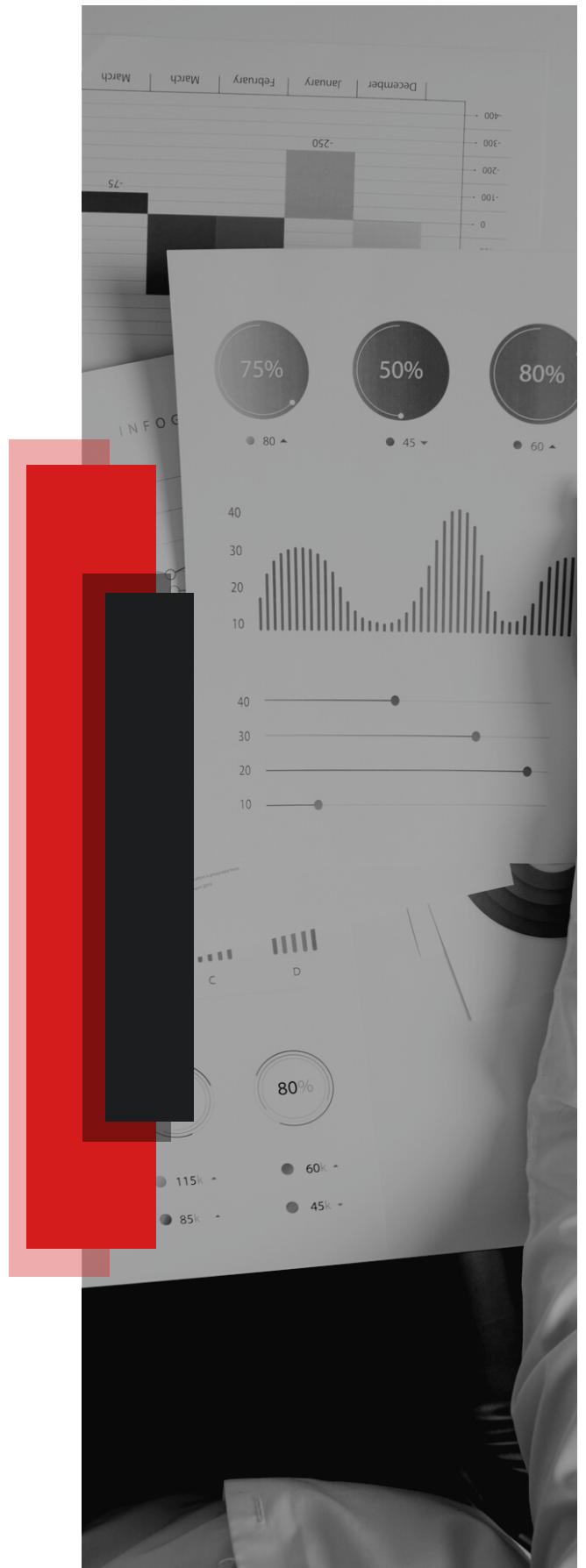


Prepared by:

Dr. Diana M. López Robledo
Director

Ms. Janice N. Segarra Rosado
Administrative Secretary III

March 2022 - Phase 3



(Dashboard UPRP English version)

Introduction

A dashboard refers to a tool that visually presents information. It can be seen as a summary of data collected and presented in a way that is easy to understand. At the Office of Planning and Institutional Research (OPIR), Microsoft Power BI was used to design graphs that allow the visualization of institutional data by the administrative staff from University of Puerto Rico at Ponce (UPRP), Central Administration personnel, as well as members of the community of the UPRP and other units from the University of Puerto Rico System (UPR).

The dashboards can present institutional data in different areas, either at the academic program, department or bachelor's degree level, or at the institutional level. The dashboards were grouped by categories, which are presented below.

Categories:

1. [Enrollment](#)
2. [Freshmen Students](#)
3. [Retention and Graduation](#)
4. [Employees](#)
5. [Degrees Conferred](#)
6. [Courses](#)
7. [Financial Aid](#)
8. [Others](#)



The dashboards for each category are presented on the following pages.

Enrollment



[↪ Program Enrollment](#)

The dashboard presents the total enrollment of the academic programs. Data can be filtered by academic year, semester, and program. It includes the total number of students, distribution by gender, and year in different visualizations.

[↪ Students FTE](#)

The dashboard includes the total of full-time equivalent students (FTE) for each academic program. Data is filtered by academic year and program. The data is presented for both semesters.

[↪ Institutional FTE](#)

The historical data of the total number of institutional full-time equivalent students (FTE) by semester and year is presented. The data can be filtered by academic semester. Minimum, maximum, and average values are included.

[↪ Average Credits per Student](#)

The average number of credits of part-time and full-time students is presented. Data can be filtered by academic year, semester, and program.

[↪ Athletic Students by Sport](#)

This dashboard presents the number of student athletes for each sport. The data can be filtered by academic year.



[Access Enrollment Category](#)



Freshmen Students

[↪ Freshmen Profile-Bachelor - Associate](#)

Freshmen students data is presented filtered by academic year and program. Associate and bachelor's degree students are included. The dashboard presents the quota, total applicants, total admitted, enrolled, and percentage of quota achieved.

[↪ Freshmen Profile-Transfer](#)

The freshmen profile for transfer programs is presented. Filters by academic year and program are included.

[↪ Freshmen Profile - Institutional](#)

Institutional totals of incoming freshmen admitted and enrolled in programs for various academic years are presented. Displays of distribution by gender and school type are presented. A comparison of total applications, admitted and enrolled students for all bachelors and associate degree programs is included.

[↪ Quota an Minimum Admission Index](#)

Quotas and Minimum Admission Index for degree-granting academic programs are presented.



[Access Freshmen Students](#) 



Retention and Graduation

[**↪ Institutional Retention and Graduation Rate**](#)

The institutional retention and graduation rate of students is presented. The data for the past five years are included. A minimum, maximum, and average value of both rates are shown.

[**↪ Retention and Graduation Rate by Program**](#)

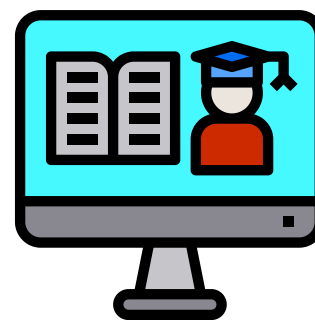
The visualizations present the retention and graduation rates of students for each academic program leading to a degree. The minimum, maximum and average value of both rates are included. Reported data is available for the last 5 years.

[**↪ Retention Rate - All Programs**](#)

Retention rates for all programs are presented in the same visualization. Bachelor's, associate's and transfer programs are included. Data can be filtered by academic year.

[**↪ Graduation Rate - All Programs**](#)

Graduation rates for all programs are presented in the same visualization. Bachelor's, associate's, and transfer programs are included. Data can be filtered by academic year.



[**Access Retention and Graduation**](#)



Employees



[↪ Faculty Profile](#)

It includes different visualizations of the faculty profile. Data can be filtered by academic year, department, and gender. Total faculty, gender distribution, academic preparation, contract type, rank, and category are presented.

[↪ Faculty FTE](#)

Full-time equivalent for faculty by department is presented. Data can be filtered by academic year.



Degrees Conferred

[↪ Degrees Conferred](#)

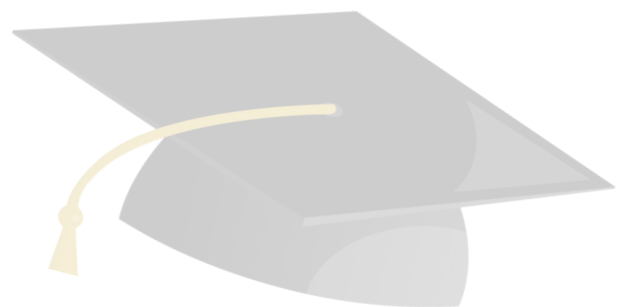
The dashboard presents historical data and the total number of degrees awarded at the institutional for the bachelor's and associate's degree programs by gender.

[↪ Honors Award](#)

Degrees conferred to graduates who obtained some recognition by average (summa cum laude, magna cum laude, cum laude) are presented. Data can be filtered by academic year and program.

[↪ Alumni Profile](#)

The alumni profile is presented by academic program filtered by year, type of employment and program of study. Also included are data about the job profile related to the discipline and the general experience of the alumni with the institution.



Courses



[🔗 Students per Course and Section](#)

A table is included with the number of courses and sections for each department, total students enrolled and average number of students per section. The data can be filtered by academic year, semester and category.

[🔗 Courses by Modality](#)

The data of courses and sections by department is presented according to the modality in which they were offered.



Financial Aid



[↪ Financial AID](#)

Presents the total number of students who received financial aid, which can be filtered by academic year.

[↪ Financial AID COVID](#)

It shows the different financial aid offered during the time of pandemic.



Others



[**↪ Suspended and Conditional Retention Students**](#)

The visualizations present the number of students suspended for academic deficiency and those on conditional retention for each academic program.

[**↪ Total Withdrawal**](#)

The dashboard presents the number of students who totally withdrew for each of the academic programs.

[**↪ Student's Program Leave**](#)

The data of students who changed their academic program (program loss) and those who left the university (institutional loss) are presented. A comparison of the data is made, filtered by program and academic year.

[**↪ Non-retained Students Cohort 2020**](#)

Non-retained student data is presented for each academic program. Included are high school data, College Board test scores, high school GPA, and reasons for total dropout, among others.

